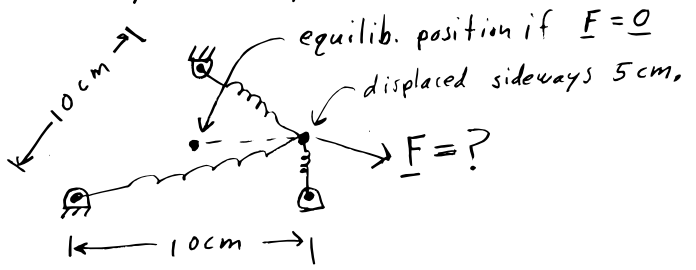


FAM 202, HW6, due tues March 6, 2001

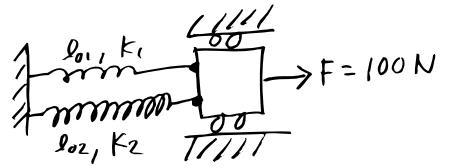
1) Three identical springs hold a small mass. Find the force  $\underline{F}$  if:

a)  $l_0 = 0$ ,  $K = 10 \text{ N/cm}$ .

b)  $l_0 = 2 \text{ cm}$ ,  $K = 10 \text{ N/cm}$ .



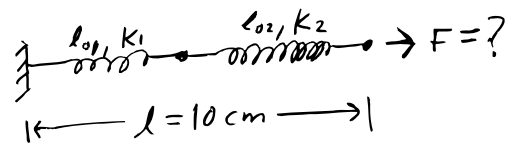
2) Find  $l$ .  
(Do not quote any complicated formulas from text or lecture. Derive as needed.)



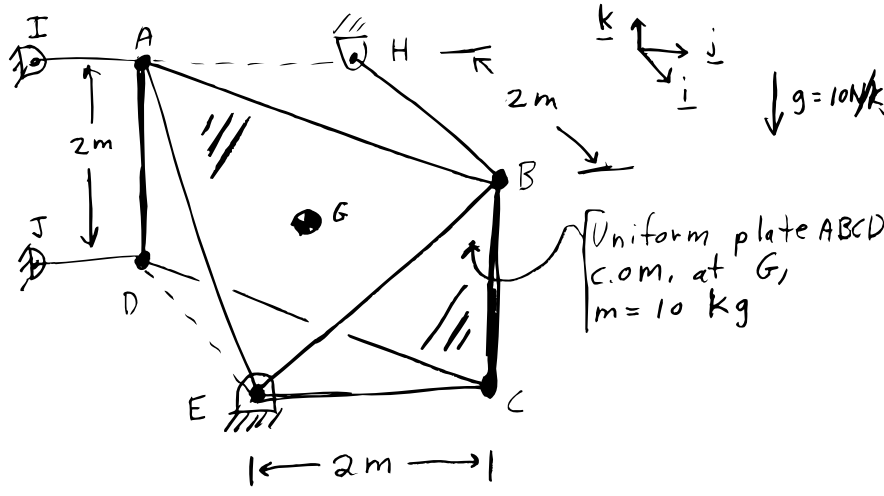
$l = ?$

$l_{01} = 3 \text{ cm}$ ,  $K_1 = 10 \text{ N/cm}$   
 $l_{02} = 6 \text{ cm}$ ,  $K_2 = 5 \text{ N/cm}$

3) Find  $F$ .



4) Sign held by 6 bars: IA, JD, HB, EC, EB, EA



Find  $T_{EC}$  &  $T_{HB}$ .

5) 4.17